

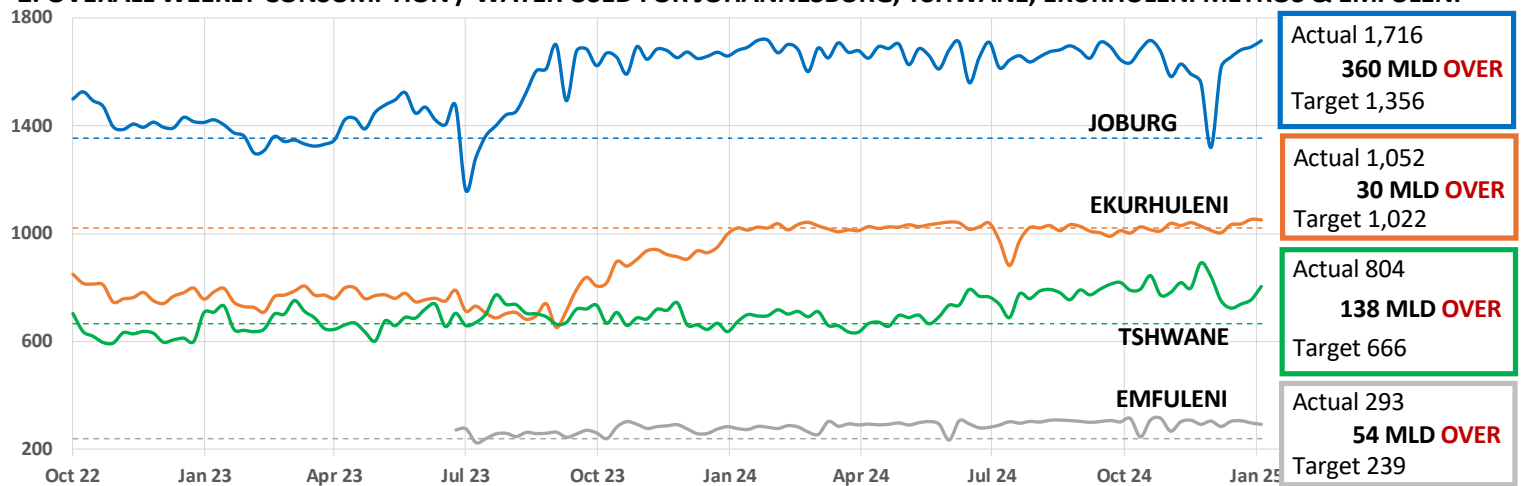
## GAUTENG WATER SECURITY DASHBOARD

1. METRO WATER CONSUMPTION	TOTAL	Joburg	Ekurhuleni	Tshwane	Emfuleni
This Week Average Daily Use (MLD)	3,865	1,716	1,052	804	293
Last Week Average Daily Use - corrected (MLD)	3,800	1,693	1,054	755	298
Water Use Efficiency Target Use (MLD)	3,283	1,356	1,022	666	239
DIFFERENCE BETWEEN TARGET AND ACTUAL (MLD)	582	360	30	138	54
% Deviation from target use	18%	27%	3%	21%	23%
Gross Per capita use (l/cd)	273	282	259	202	406
Increase/Decrease from previous week	↑	↑	↓	↑	↓

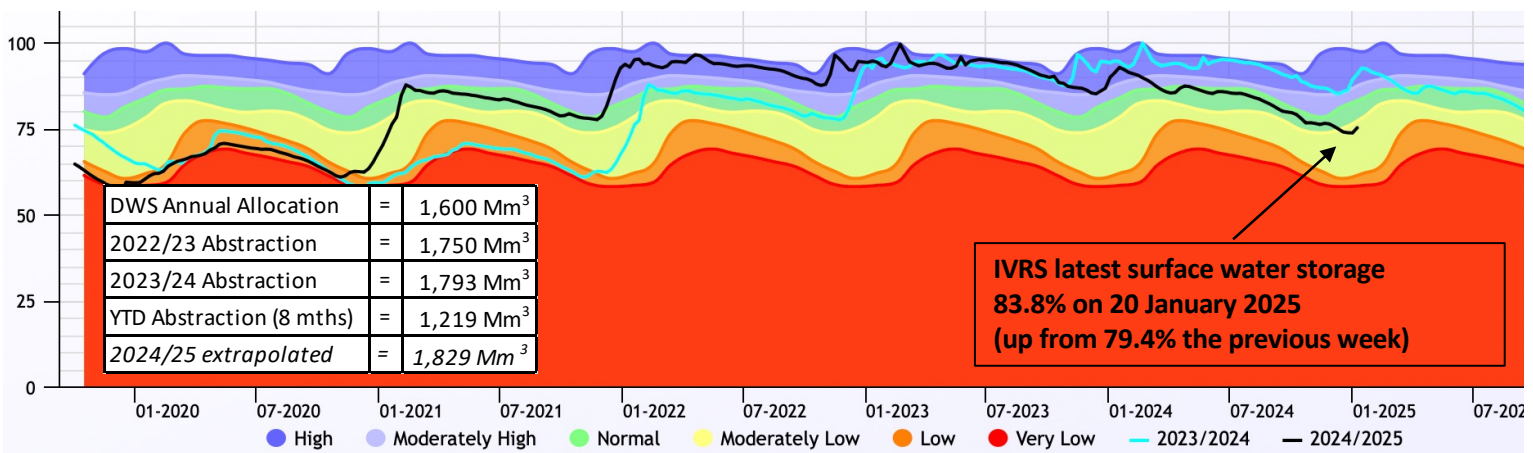
\* ↓ Decrease from last week, but above target    ↑ Increase from last week, but in target    ↓ Decrease, within target    ↑ Increase

- MLD = millions of litres per day, the common measurement of total water use for cities
- WUE = Water use efficiency targets is the target demand that matches the licence conditions of Rand Water. This is shown as target demand in dotted lines on the graph. The three metros & Emfuleni comprise ±90% of the WUE target
- Weekly demand figures are from Rand Water meter readings. System balancing and reconciliation due to meter inaccuracies sometimes result in corrections to previous weekly readings.
- Demand increased in all major municipalities. All major users are exceeding their Project 1600 WUE targets and combined use has increased to **18%** above target in the previous week.

## 2. OVERALL WEEKLY CONSUMPTION / WATER USED FOR JOHANNESBURG, TSHWANE, EKURHULENI METROS &amp; EMFULENI



## 3. IVRS SYSTEM STATUS – 5-year Vaal Major combined surface water storage



- The 5-year Vaal Major system storage is shown as an indication that it is tracking lower than in the previous 3 years. DWS Restrictions are implemented on the IVRS when dam levels are below 60% at the beginning of the hydrological year starting in May of each year. Should over-abstraction continue, and rainfall be lower than normal, the DWS model is likely to indicate that restrictions be imposed in May 2025. The Vaal dam level has increased from **46.2% to 61.3%** in the past week. Sources: <https://www.dws.gov.za/niwis2/SurfaceWaterStorage> and <https://www.dws.gov.za/Hydrology/Weekly/RiverSystems.aspx?river=IV>
- The weekly weather forecast shows hot weather across Gauteng with limited rain forecast for the next week.
- All water users are urged to use water sparingly; to refrain from using tap water to irrigate gardens, wash down hard-surfaces etc.